



Toronto City Mission

July 2010 - June 2011 Annual Report



We demonstrate God's love in our City by:

developing **PARTNERSHIPS**,
forming **RELATIONSHIPS**,
cultivating **LEADERS**, and
providing **PROGRAMS**.

Our Mission, Vision and Core Values

Toronto City Mission exists to demonstrate God's love. We **partner** with our neighbours to transform at risk communities by forming strong **relationships**, cultivating community **leadership** and providing proactive social and educational **programs**.

By God's grace, we envision a city of vibrant, hope-filled communities where neighbours experience and share God's love.

In this pursuit, we seek to be...

- Christ-Centred
- Serving Others
- Relationship Focused

Page

Contents

3

Message from the E.D.

4

Story of Transformation

5

Intentional **RELATIONSHIPS**

6

Providing **PROGRAMS**

8

Cultivating **LEADERS**

10

Developing **PARTNERSHIPS**

11

Financial Highlights

12

TCM's **LEADERS**





From the Desk of Andrew Schell

A message from the Executive Director

Dear Friends,

In last year's annual report, we emphasized the importance of relying on God's guidance and in building strong relationships. We also outlined the process that we underwent to review our long term strategy and identify the key points of focus for the next few years. This year, I am pleased to describe the results of this review. We have decided to concentrate on three items to achieve our long term goals:

People:

TCM currently operates in five Toronto neighbourhoods. The role of our Community Workers is to build relationships with individuals and families in each community. It is easy to see the correlation between these relationships and transformed lives. You will read an interview of Kevin Lagran on page 4 and see how integral the TCM staff members are to his faith journey. We are excited to announce that we are committed to investing in staff: namely Community Workers. We have now approved the first three years of a plan to hire a total of six staff members.

Brand:

TCM is the oldest mission in the city yet many people do not know about us. To improve awareness of our important work, we are re-building our "brand" image including logo, statement of approach and image. Once completed, the new image will be used consistently across all methods of communication including newsletter, web design, stewardship reports etc. This will mark the beginning of an intentional effort to broaden awareness of our city and TCM's approach to meet these needs.

Programs:

We know that the needs of each high priority neighbourhood we serve are different. However, there is still a lot of commonality. We will conduct both community assessments as well as periodic program assessments to make sure we understand the evolving needs of each community and deliver the programs that support these needs effectively. Core programs have been identified and opportunities to expand these will be determined and implemented.

None of these changes will work without God's guidance and blessing! Therefore, in everything we implement, we seek God's wisdom through prayer. We ask you to join with us in praying for Toronto City Mission. May God continue to be the center of our focus.

Faithfully Yours,

Andrew Schell



RELATIONSHIPS That Transform

Interview of Kevin Lagran by Elliott Shin

For the sake of those reading this article, tell us a little bit about yourself.

I am a first year York University student enrolled in the Psychology program. My mom and dad are hard working parents and I also have a younger sister. I enjoy spending time with my friends, playing video games, watching movies, and going out to eat. Currently I am working part time at McDonald's to help pay for my schooling. And I really enjoy helping others.

Tell us what it's like to live in St. James Town.

I have lived in St. James Town (SJT) all of my life so I do not know what it would be like to live anywhere else. There is always something to do in SJT. I am especially glad that I have made good friends from all over the world. Yes there is lots of diversity in SJT. I am thankful for the friends I have made in SJT and I have a strong feeling that they will remain lifelong friends. However, there are some things about living in SJT that are difficult. The community is often dirty (lots of garbage in certain areas) and dangerous (there are often shootings and exposure to drugs). Sometimes I just don't feel safe.

How long have you been involved in Toronto City Mission programs? What do you like about being involved in TCM programs?

I have been attending programs at TCM since the 2nd grade. I have participated in Kids Club, Jr. High, was a LIT (now called TLC), Jr. High, Senior High, and now I am a volunteer. I also participated in numerous summer and March break camps.

I have met a lot of great friends while attending TCM programs. I have also really enjoyed meeting and getting to know the TCM staff. I am really impressed at how much the staff are not only involved in our lives but also in the community. I also really like the worship time and learning about Jesus. TCM has been a really huge part of my life.

Can you tell us a little bit about your journey of faith? Were there significant events in your life that brought you to where you are today?

I grew up Catholic. My mom took me to mass almost every Sunday and all my life I attended Catholic schools. However because of my participation in TCM programs, my Catholic beliefs began to change. I always had a strong sense of God in my life, and I was always interested in "God things" but it wasn't until late in grade school while attending the TCM after school program that God began to plant a seed in my heart that kept growing. Meeting TCM staff members, going to TCM camps and retreats, and attending Youth for Christ conferences really helped in my faith journey.

Can you tell us about the TCM March Break Retreat you attended last year?

In March 2011 I was lucky to attend the senior high March break retreat. We went up to a camp called Deer Lake which had fantastic facilities! This time was significant for me because it was that weekend that I finally made the decision to follow Jesus. It was an excellent weekend: enjoying delicious food, spending time with my friends, meeting new friends, enjoying the outdoors, and most importantly, experiencing wonderful worship. It was at these worship times that I realized (through our speaker) how much Jesus loved me. Things regarding my faith just made sense. I also got to speak to some of the TCM staff and ask a lot of questions. So the March retreat was significant for me because I made the commitment to follow Christ!

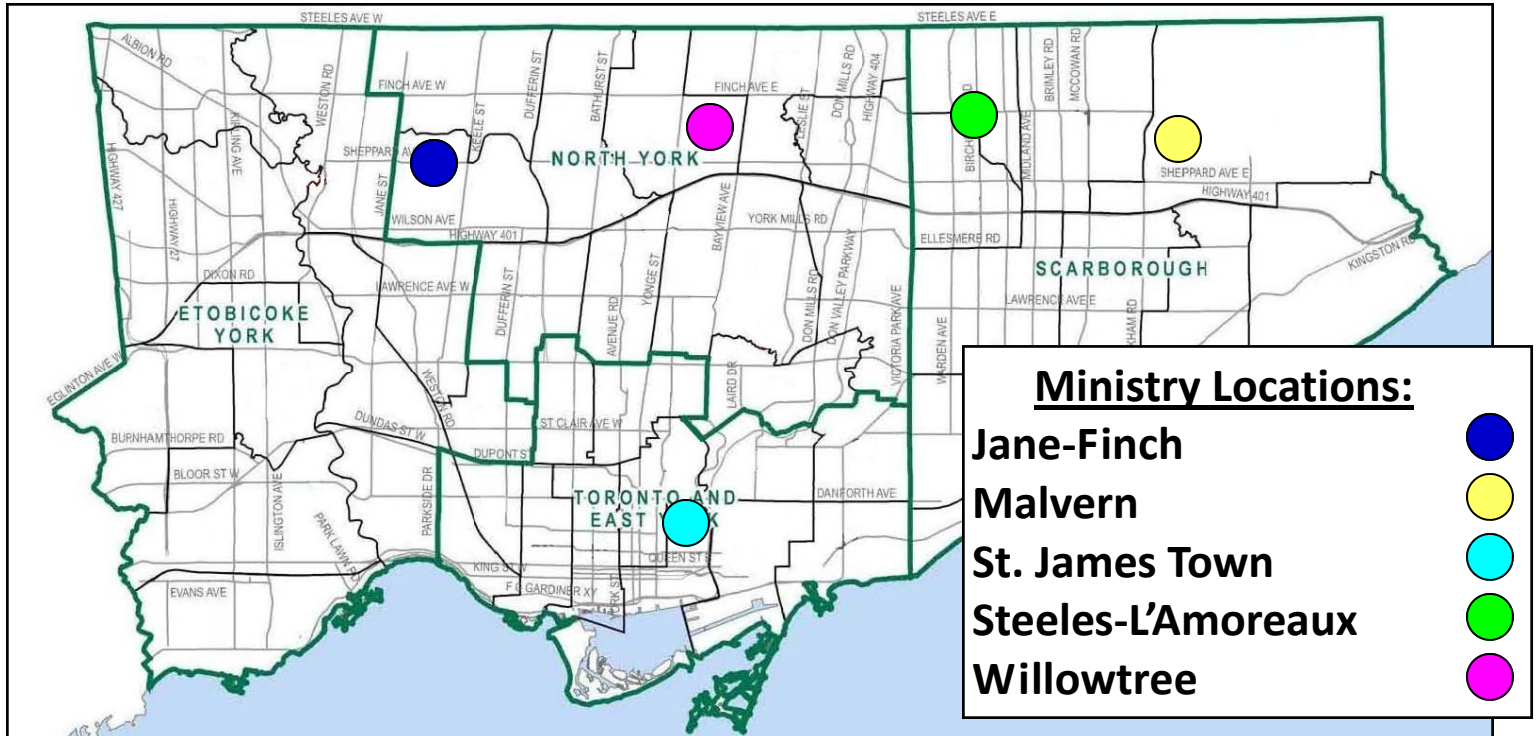
What are your dreams for the future?

I have just a couple of really important dreams. I would like to eventually become either a police officer or lawyer. And I dream to be a man that continues to pursue my Christian faith!



Intentional RELATIONSHIPS

Toronto City Mission has five Ministry Locations in Toronto. We believe in incarnational ministry, meaning that where possible our community workers live in the communities where they serve. They seek to build **RELATIONSHIPS** with community members, assess their strengths and needs and implement programs based on those observations.



Jane-Finch

Is one of the 13 priority neighbourhoods as designated by the City of Toronto. The 2006 census report indicated that almost 30% of families were headed by single parents (the majority of which are single mothers), 24% of families were below the low income cut-off, and 70% of individuals were visible minorities. Each of these stats are significantly higher than the city average.

Malvern

A priority neighbourhood that has experienced dramatic increases in social problems over the past 20 years. This community lays claim to the highest percentage of visible minorities in Toronto at 86.6%. It also has the highest percentage of youth (ages 15-24) in the city with the third highest youth unemployment rate. This combination may contribute to the increase in gang activity in this area in recent years.

St. James Town

Represents the area with the highest population density in all of Canada (64,636.4 ppl/km² compared to 886.1 ppl/km² for Toronto). 50.6% of families live below the poverty line. Most of our program participants are Filipino. The 2006 census confirmed for us that we are reaching a key demographic because Tagalog (Filipino) ranked at the top of the non-official home languages and Filipino as the largest ethnic group (2,950).

Steeles-L'Amoreaux

Is a priority neighbourhood and a common place for newcomers to Canada to live. 80% of the community has immigrated to Canada with major trends in immigration from Eastern Asia (China, Hong Kong) 41% and South Asia (India, Pakistan) 15%. Many community members struggle with the challenges of settling in a new country, for example acquiring a new language and obtaining meaningful employment.

Willowtree

Is a small government subsidized housing community that borders an affluent community. The result of seeing, but not having makes it harder for children and families to cope in their current circumstances. 58% of the population of Willowtree are children and youth (<25 yr.). Willowtree also has a very high population of adult females (3x higher than males) which corresponds with the high incidences of single moms.



Providing PROGRAMS

Our programs are the platform on which **RELATIONSHIP** are formed. They allow us to build trust with children, youth, and parents. Once this trust is established, community members feel comfortable asking for advice, help and prayer.

Adult

Women’s Bible Study (*St. James Town*) A small group of faithful women met twice a month to study Scripture and pray. It has been amazing to see the women deepen their **RELATIONSHIP** with God and grow to trust one another.

Role Model Moms (*Jane-Finch*) TCM partnered with World Vision Canada through “Partners to End Child Poverty” to provide Role Model Moms for the Jane-Finch Community. This year we ran two sessions of Role Model Moms. Each class had **12** people registered. We had the privilege of helping **8** moms pass their General Education Equivalency Exam and thus take a huge step toward improving the quality of their lives.



RP3 - Employment Mentoring (*Steeles-L’Amoreaux*) - This program pairs newcomers to Canada with a mentor who helps equip them with the skills and confidence they need to find meaningful employment.

Men’s Basketball (*St. James Town*) - This program gives men a stress-free environment to come together and have fellowship while “playing ball.” It gives us the opportunity to build **RELATIONSHIPS** with the fathers of the children we serve.

Mother & Daughter Crafts (*St. James Town*) - An average of **15** Moms and daughters gathered once a month to spend quality time together and to create a works of art (i.e. mosaics, cards, jewellery...).

Women of Hope (*Malvern*) - A dedicated group of **6 to 8** women met every Monday morning to practice their English and as a result developed friendships with their neighbours.



Children

KIC - Kids In Community (*Steeles-L’Amoreaux, Malvern, St. James Town*) KIC was provided 5 days a week in St. James Town and has more than 40 kids in attendance each day. KIC ran once a week in Bridle-towne and, for the first time, it was offered four days a week in the Malvern Community!

EPIC - Education Provided In Community (*Steeles-L’Amoreaux, St. James Town, Willowtree*) This year the tutoring program provided homework help for an average of **54 children and youth** each week. Dedicated volunteer tutors met with their student once a week for a total of **3252 volunteer hours!**

Music Experience (*Steeles-L’Amoreaux*) This year **20** kids benefited from free music lessons. These lessons included singing, guitar, and recorder.



Creative Ministries (*Malvern, St. James Town*) This year, Adele Simmons, gave the children opportunities to express themselves through music, movement, puppetry, guitar, etc. She also helped the children prepare for their choral performance at **Ignite**, our inaugural fundraising event.

Youth

Junior High Ministry (*St. James Town*) Twice a week **15 to 20** junior high aged youth gathered together for Bible study, games and fun.

Senior High Programs (*St. James Town*) The Senior High Program had a group of **20 to 25** committed young people who attended each week. This year they had the privilege of going on 2 weekend retreats at Deer Lake Camp and Conference Centre.

TLC - Teens Leading Communities (*Jane-Finch, Malvern, St. James Town, Willowtree*) This program equips youth to be **LEADERS** in their communities. During the summer **15** TLCs used these skills to serve as leaders at our Sunshine Day Camps!

Camps

Family Camp 2010 (*St. James Town*) More than **60** people enjoyed a wonderful time of relaxation at TCM Family Camp located at Deer Lake Camp and Conference Centre.

Sunshine Day Camp (*All Sites*) We ran six day camps and provided fun summer activities and shared God's love with an average of **200 children each week** (with a total of 1374 camper weeks). Last summer we partnered with Ephraim's Place Community Centre to run Sunshine Day Camp for the first time in the Jane-Finch Community.

Junior High Day Camp (*St. James Town, Malvern and Willowtree*) We served an average of **25** junior high youth each week.

March Break Camp (*St. James Town, Malvern, Willowtree*) TCM provided a safe place for **more than 50** children to spend their March Break. Some of the children were delighted to go to on a field trip to a Maple Syrup Festival.

Community

Adopt-a-Family (*All Sites*) During Christmas 2010, **148** families were sponsored through our Adopt-a-Family program. That represents **536** individuals who had a brighter Christmas because of the generosity of individuals, families and companies in our city!

Community Gatherings (*All Sites*) All of our sites provided Christmas Celebrations for their community members. In addition, the families of St. James Town gathered every other month to enjoy a potluck meal. For the third year in a row, Steeles-L'Amoreaux helped host the Brookmill School Family Fun Fair.

Family Visits (*All Sites*) We are more than a social service agency that provides services to communities. Family visits help us develop real **RELATIONSHIPS** with those we serve and as a result we become friends, mentors, counsellors, cheerleaders, and even a shoulder to cry on.



Cultivating LEADERS

Toronto City Mission is dedicating to building LEADERS in our city. Every TCM Community Worker invests time and energy to recruit, train, and equip: volunteers, mission teams, summer interns, year-long interns, placement students, and TLCs. In return these young LEADERS give back to their city and build strong RELATIONSHIPS with the community members we serve.

Highlights from 2010-2011

Mission Teams - During the summer of 2010, **16** volunteer mission teams gave a week of their summer to help us run day camps across the city. Mission teams alone made up a total of 1680 volunteer hours.

Summer Internship Program - During the summer of 2010 we had **29** summer interns serving at day camps in 6 locations across the city.

Year-Long Interns & Placement Students - From September 2010 to June 2011 we had **4** year long interns and **6** placement students serving alongside our Community Workers.

Volunteers - From September 2010 to June 2011 our volunteers invested a total of approximately **6070** hours to build RELATIONSHIPS with children, youth and families .

Tutors - Dedicated volunteer tutors met with their matched child once each week for a total of **3252** volunteer hours! These tutors act as coaches to their students, encouraging them to take risks and try new things and praising them for their effort.

TLCs (Teens Leading Communities) - All TLC participants are from the communities that TCM serves. They are trained in leadership skills and disciplined in faith. During the summer of 2010, **15** TLCs practiced their new found leadership skills as they served at our Sunshine Day Camps!



“This summer I grew a brain for ideas, a heart for children, and a soul for God. Before camp, I apparently wasn’t functioning properly.” - Hilary Sundberg (Summer Intern 2010)

Cultivating LEADERS

An Intern's reflection on her year long service at Toronto City Mission...

By Rachelle Luk

It all started with a Google search. I had been praying for an opportunity to work at a summer camp where I would be pushed out of my comfort zone and grow as a leader. I sorted through many websites and organizations that looked interesting but God prompted me to keep searching until I finally found the TCM Summer Internship. He not only wanted me to go outside of my comfort zone and grow, but He also wanted me to put my faith into action.

That summer in Malvern was much more difficult, exhausting, fun, meaningful, and inspiring than I could ever have imagined, and God was continually showing me that He provides in overflowing abundance when we ask in faith. What a joyful moment when I watched two of my campers accept Christ for the first time! At the end of that amazing summer, I sensed that I was not done with TCM and that somehow I would be returning to serve in the future.



Rachelle served as a year-long intern in 2010-2011 and also served as a summer intern in 2009.

The lessons I had learned from the campers in Malvern continued to impact me powerfully as I returned to U of T to finish 2 more years of study. In the fall of my 4th year, I felt God leading me to consider taking the next year off instead of applying right away for Teacher's College. It was scary to think that God's plan might be so different than my own plan! He led me back to TCM for a Year-long Internship, and gave me peace and assurance about the decision. I was given the opportunity to return to the Malvern community, and also to serve in St. Jamestown and Jane/Finch communities, as well as in the TCM office.

Some days I would come home feeling so frustrated and overwhelmed. The kids could be defiant and difficult with me, or sometimes I was surrounded by people facing challenging situations that I barely knew how to respond to. Often I just felt overwhelmed by being constantly exposed to social issues and injustices here in my own city. Through all of this, God continued to demonstrate His faithfulness. I witnessed stories of hope unfolding as children and families experienced God's love for them in a tangible and meaningful way. I was supported and guided by the TCM staff team each step of the way, and was led by their examples of humility and prayerfulness. Even in moments when I found it impossible to love a certain child, I could feel the reality of God's love for them in me.

Through this internship year, I have learned to live and share my faith more authentically than before. My priorities in life have become more ministry-focused and less material. I am much more aware of social problems and of the need for holistic solutions. I have also learned that it's really not about blaming someone for poverty. God's focus is not about us figuring out who to blame for problems, but about our willingness to become His hands and feet wherever He places us.

"Through this internship year, I have learned to live and share my faith more authentically than before."

Developing PARTNERSHIPS

Toronto City Mission relies heavily on **PARTNERSHIPS** in order to be effective in urban ministry. Partnerships have the power to multiply the effectiveness and breadth of our impact on communities. TCM **PARTNERS** with donors, churches, Christian ministries, foundations and corporations. The space, money, resources, and prayer that these partners provide have a cumulative effect on the positive changes that occurs in the lives and communities we serve. **We'd like to take this opportunity to thank all of our PARTNERS!**

Recognition of Sponsors:



Thank you to all the sponsors of "Ignite"! Thanks to your generous support we were able to raise over \$40,000 to make a significant impact in Toronto. Special thank you to our sponsors: Timbren Industries Inc., KPMG, and Caldwell Investment Management.

Thank you **VIA Rail** for sponsoring "SpikeBack Against Poverty 2011"! Thanks to your generous sponsorship, we raised \$21,000. You helped sponsor over 300 at-risk children to attend Sunshine Day Camps!



Church Partners:

We want to give special thanks and recognition to the following churches for partnering with Toronto City Mission to provide an accessible space for our community programs:

Jane-Finch - Emmanuel Church of the Nazarene/ Ephraim's Place

Malvern - Malvern Methodist Church

St. James Town - St. Paul's on Bloor and St-Simon-the-Apostle

Steele's L'Amoreaux - Bridletowne Park Church and Chinese Gospel Church Scarborough

Willowtree - Wellspring Worship Centre

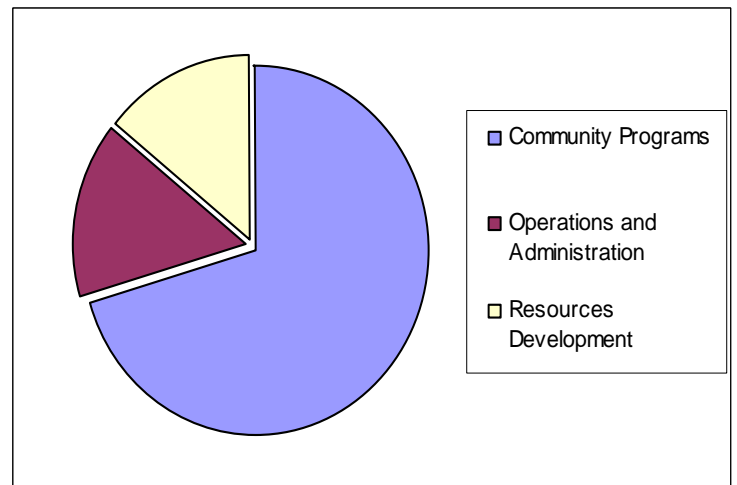
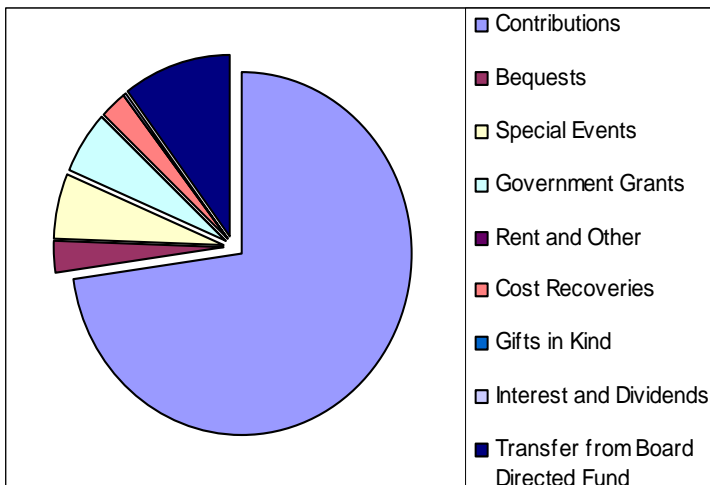


Financial Highlights



TORONTO CITY MISSION STATEMENT OF OPERATIONS—GENERAL FUND

	2011	2010
REVENUES		
Contributions	\$ 652,457	\$ 687,030
Bequests	\$ 23,395	\$ 85,000
Special Events	\$ 52,707	\$ 41,529
Government Grants	\$ 48,648	\$ 66,930
Rent and Other		\$ 19,017
Cost Recoveries	\$ 23,819	\$ 26,179
Gifts in Kind	\$ 530	\$ 1,595
Interest and Dividends	\$ 480	\$ 57
Transfer to/from Board Directed Fund	\$ 93,156	(\$ 65,500)
	<u>\$ 895,192</u>	<u>\$ 861,837</u>
EXPENSES		
Community Programs	\$ 629,075	\$ 607,229
Operations and Administration	\$ 140,457	\$ 126,504
Resources Development	\$ 125,660	\$ 128,104
	<u>\$ 895,192</u>	<u>\$ 861,837</u>
EXCESS OF REVENUES OVER EXPENSES	<u>\$ -</u>	<u>\$ -</u>



Toronto City Mission's **LEADERS**

TCM Staff and Board

MAIN OFFICE STAFF	
Executive Director	Andrew Schell
Ministry Director	Steve Chu
Development Director	Maureen Pryce
Program Director	Elliott Shin
Administrator	Ellie Duiker
Communications	Naomi Van De Visch
Bookkeeper	Carol Bain
Volunteer Coordinator	Eric Song

BOARD OF DIRECTORS	
Chair	Michael Williams
Vice-chair	Peter vanOordt
Secretary	Trevor Seath
Treasurer	Houston Cheng
	Kendall Fullerton
	Neil Hodgson
	Jonathan James
	Mark Reece

COMMUNITY WORKERS	
JANE-FINCH	
Role Model Moms	Emily Slotegraaf
MALVERN	
Artistic Director	Adele Simmons
Community Worker	Gilman Ho
Community Worker	Mimi Quong
STEELES-L'AMOREAUX	
Community Worker	Guy Freeman
Community Worker	Nicki Freeman
Community Worker	Tim Yuen
ST. JAMES TOWN	
Community Worker	Elita Fung
Community Worker	Jennifer Perry
WILLOWTREE	
Community Worker	Shelby Hall

For more information or to donate visit us online at www.torontocitymission.com



2610 Birchmount Rd., Toronto, M1W 2P5 ♦ P:416.922.6223 ♦ Fx:416.924.3071

Charitable Registration number: 10811 4158 RR0001

TCM is a registered member of the Canadian Council of Christian Charities.

